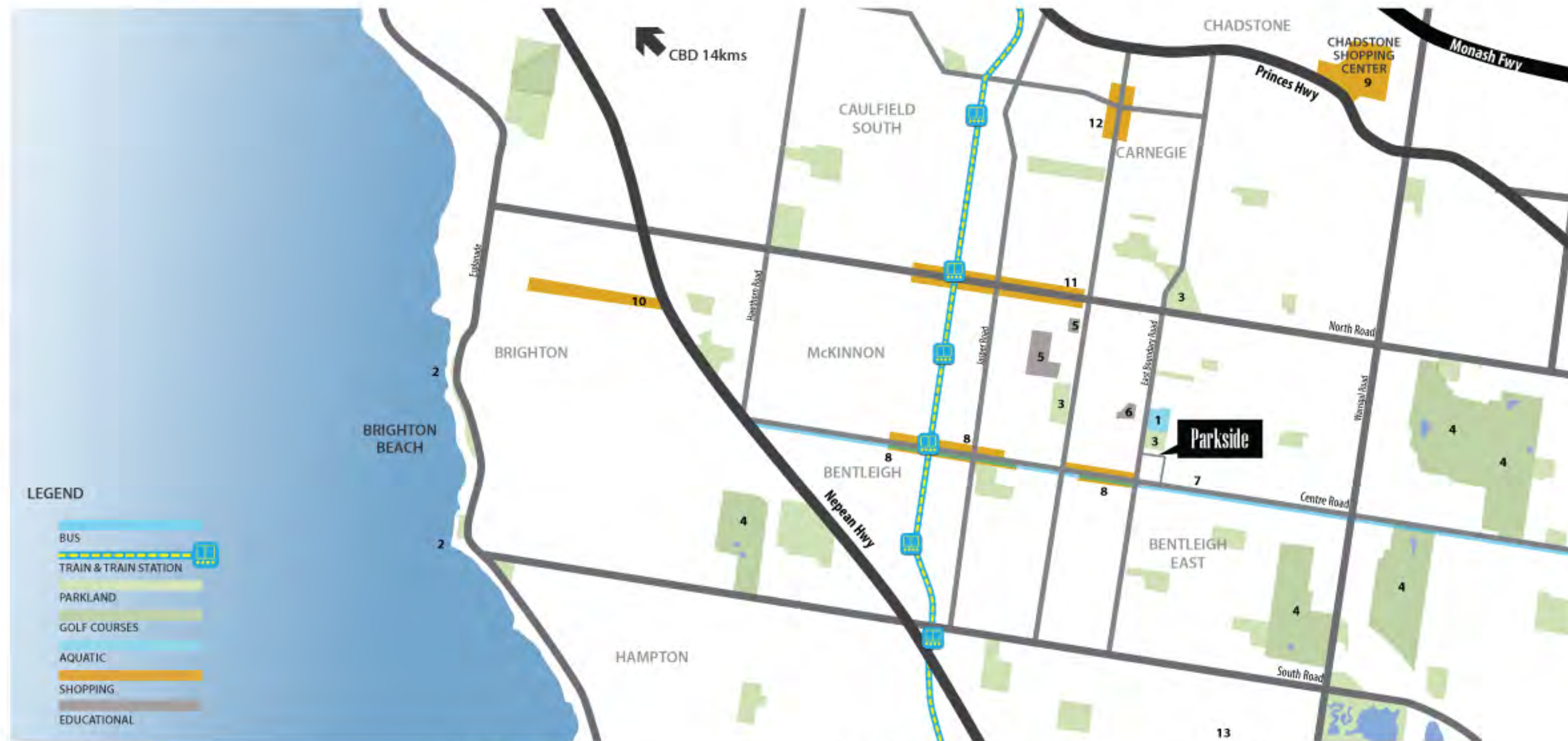


# PARKSIDE

BENTLEIGH EAST



# LOCATION



- Parks & Recreation**
- 1 - GESAC (Glen Eira Sports and Aquatic Centre)
  - 2 - Brighton Beach
  - 3 - Parks & Reserves (Bailey Reserve)
  - 3 - Parks & Reserves (Duncan Mackinnon Reserve)
  - 3 - Parks & Reserves (McKinnon Reserve)
  - 4 - Golf Courses (Yarra Yarra Golf Club)
  - 4 - Golf Courses (Commonwealth Golf Club)
  - 4 - Golf Courses (Huntingdale Golf Club)

- Parks & Recreation**
- 4 - Golf Courses (Metropolitan Golf Club)
  - 4 - Golf Courses (Brighton Golf Club)
- Schools & Amenity**
- 5 - Schools (McKinnon Primary School)
  - 5 - Schools (McKinnon Secondary College)
  - 6 - Schools (Valkstone Primary School)
  - 7 - Moorabbin Hospital

- Shopping & Retail**
- 8 - Centre Road Shopping Strip
  - 9 - Chadstone Shopping Centre
  - 10 - Bay Street Shopping Strip
  - 11 - North Road Shopping Strip
  - 12 - Koornang Road Shopping Strip
  - 12 - DFO Moorabbin Factory Outlets

- Coffee & Dining**
- 8 - Centre Road Cafes & Restaurant
  - 9 - Chadstone Shopping Centre Cafes & Restaurant
  - 10 - Bay Street Cafes & Restaurant
  - 12 - Koornang Road Cafes & Restaurant



## PARKSIDE HOMES

Offering 8 spacious apartments over only two levels; Parkside is designed with the discerning buyer in mind. Big on style and space; with 3 metre ceilings, 2.7 metre stack sliders, massive private courtyard gardens or terraces to seamlessly bring your living space from inside to out.

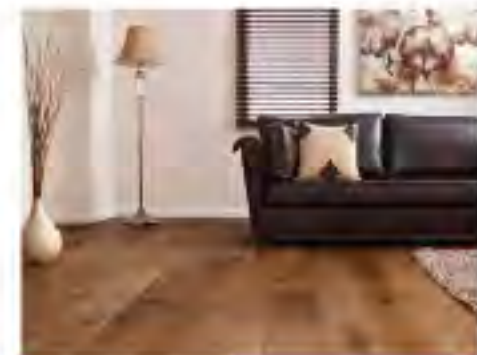
The eight spectacular apartments on offer at Parkside represent the highest levels of luxury. Individually crafted to accommodate your wants and needs in a clean and contemporary fitout with opulent features incorporated that will have you thinking twice about whether you're in an apartment or a house.



# FINISHES

## Internal Colour Scheme

Paint White



Flooring:  
Balinese Oak



Carpet (bedrooms):  
Venice Twist



Robes (bedrooms):  
Mirror

## Kitchen



Benchtops:  
Caesarstone



Joinery:  
Gloss White



Splashback:  
Black Glass



Kickrail:  
Black

## Bathroom



Benchtops:  
Caesarstone



Joinery:  
Gloss White



Floor Tile:  
Porcelain (600x600)



Wall Tile:  
Porcelain (600x600)

# FIXTURES

## Internal Colour Scheme



Sink:  
Stainless Steel AFA Vertus



Sink Mixer:  
Teknobili



Pantry:  
Integrated Slide Out



Bin:  
Pull-out



LED:  
Recessed Lighting

## Kitchen



Dishwasher:  
Fully Integrated



Oven:  
Bosch Convection



Cooktop:  
Bosch Gas



Rangehood:  
Bosch Integrated

## Bathroom



Vanity Basin:  
Porcher Quatre



Basin Mixer:  
Nobili Black



Shower Head:  
Nobili Black



Shower Mixer:  
Nobili Black



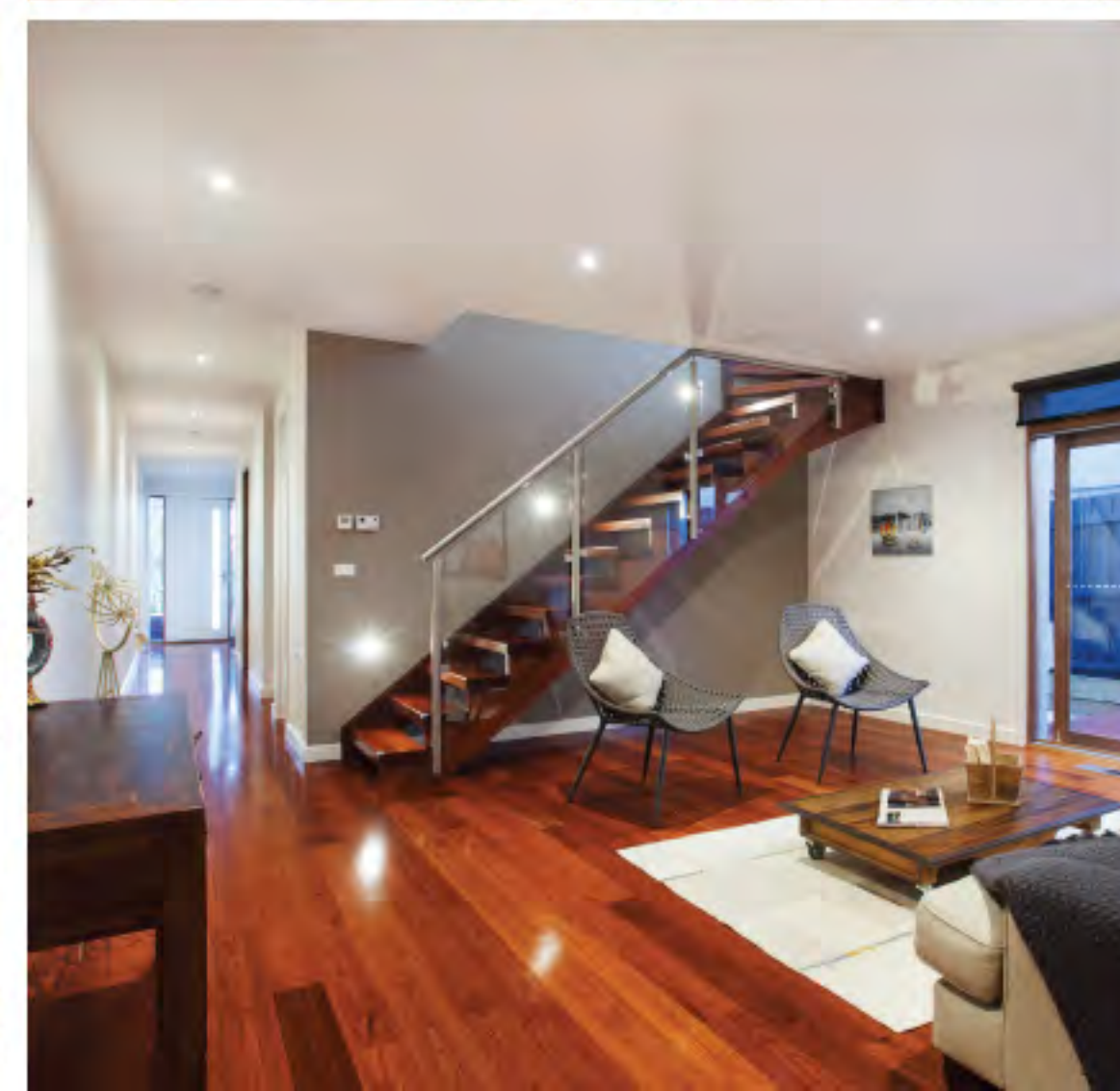
Toilet Suite:  
Roca Soft Close Seat



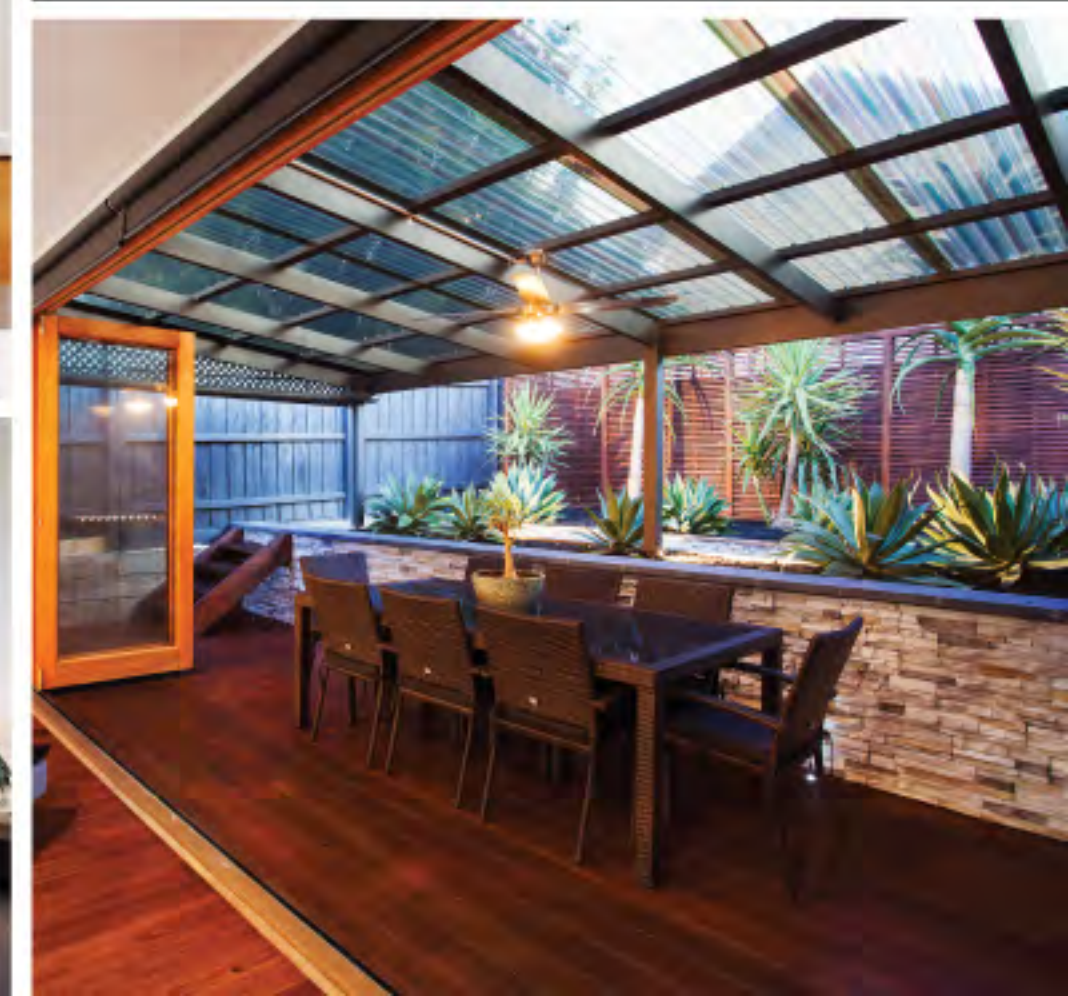
Shower Screen:  
Frameless Glass

## THE DEVELOPER

Tonykon Constructions is a well-known and respected name in the property and construction industry. TonyKon constructions are family company that was established in 1986 with an extensive portfolio of successful projects delivered across all market sectors. Tonykon Constructions are renowned for delivering high-end quality developments and look forward to bringing its vast experience and reputation for excellence to yet another landmark residential project.



TONYKON CONSTRUCTIONS  
PTY LTD





Parkside, 13 Quinns Road, Bentlyigh East